



**(Beet)höflich, (Mo)zärtlich,**

& einen **Haydn** Spaß dabei ...

20 Spielstücke der Meister der Wiener Klassik

Sehr leicht – leicht (Grad 1 & 2)

Bearbeitet von Gottfried Hummel

**Band 1**

**FREE  
DOWNLOAD**

**FREE  
DOWNLOAD**

- Europahymne
- Die deutsche Nationalhymne
- Andante Gracioso (Mozart)
- Partitur & Begleitung
- Melodie in C hoch
- Melodie in B
- Melodie in Es
- Melodie in C (Bass-Schlüssel)

# Europahymne "Freude schöner Götterfunken"

Musik: Ludwig van Beethoven Bearb.: Gottfried Hummel

Melodie

Bgl. *mf*

Mel. <sup>5</sup>

Bgl. *f* *mf*

Mel. <sup>9</sup>

Bgl. *f*

Mel. <sup>13</sup>

Bgl. *f*

Mel. *mf*

Bgl. *mf*

Mel. *ff*

Bgl. *ff*

Mel.

Bgl. *mf*

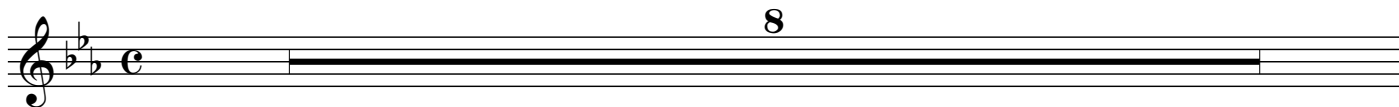
Mel. *f* *ff*

Bgl. *f* *ff*

# Europahymne "Freude schöner Götterfunken"

Musik: Ludwig van Beethoven Bearb.: Gottfried Hummel

8



A musical staff in G major (one sharp) and common time (C). It contains a whole rest for 8 measures.

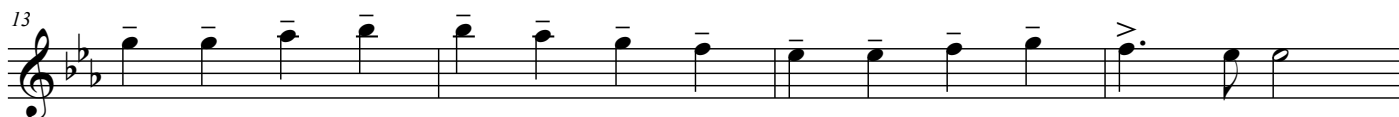
9



*f*

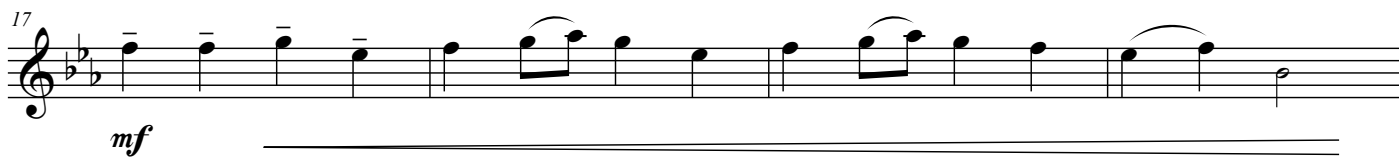
A musical staff starting at measure 9. It contains a series of quarter notes with stems pointing down: G4, A4, B4, C5, B4, A4, G4, F4, E4, D4, C4. The final note C4 has an accent (>) and a fermata. The dynamic marking *f* is below the staff.

13



A musical staff starting at measure 13. It contains a series of quarter notes with stems pointing down: G4, A4, B4, C5, B4, A4, G4, F4, E4, D4, C4. The final note C4 has an accent (>) and a fermata.


17



*mf*

A musical staff starting at measure 17. It contains a series of quarter notes with stems pointing down: G4, A4, B4, C5, B4, A4, G4, F4, E4, D4, C4. The notes from G4 to C5 are beamed together. The notes from B4 to C5 are also beamed together. The dynamic marking *mf* is below the staff.

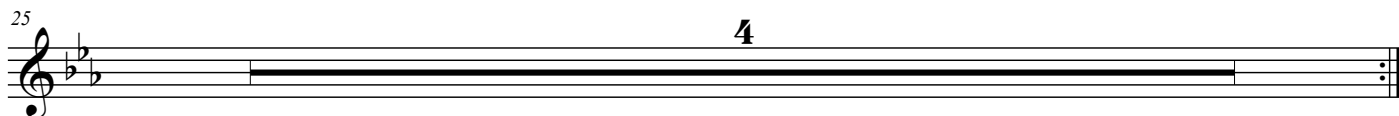
21



*ff*

A musical staff starting at measure 21. It contains a series of quarter notes with stems pointing down: G4, A4, B4, C5, B4, A4, G4, F4, E4, D4, C4. The final note C4 has an accent (>) and a fermata. The dynamic marking *ff* is below the staff.

25



4

A musical staff starting at measure 25. It contains a whole rest for 4 measures. The number 4 is written above the staff.

29



*f* *ff*

A musical staff starting at measure 29. It contains a series of quarter notes with stems pointing down: G4, A4, B4, C5, B4, A4, G4, F4, E4, D4, C4. The notes from G4 to C5 are beamed together. The notes from B4 to C5 are also beamed together. The final note C4 has an accent (>) and a fermata. The dynamic markings *f* and *ff* are below the staff.

# Europahymne "Freude schöner Götterfunken"

Musik: Ludwig van Beethoven Bearb.: Gottfried Hummel

8



9

*f*



13



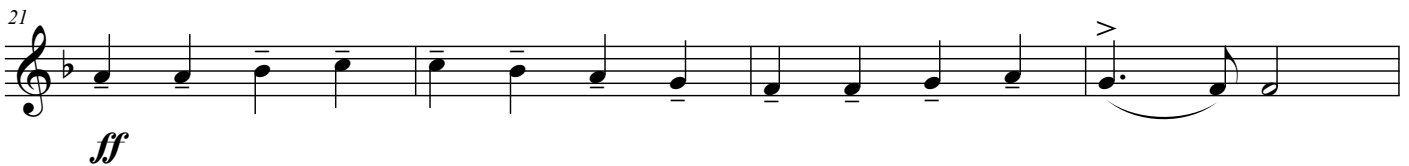
17

*mf*



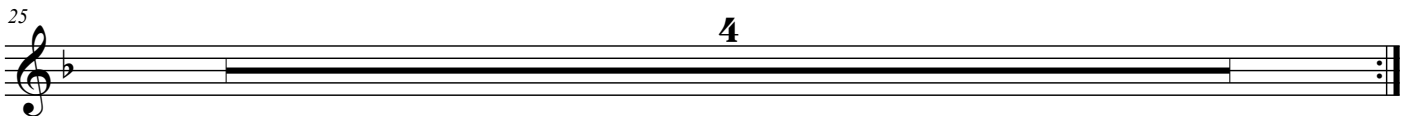
21

*ff*



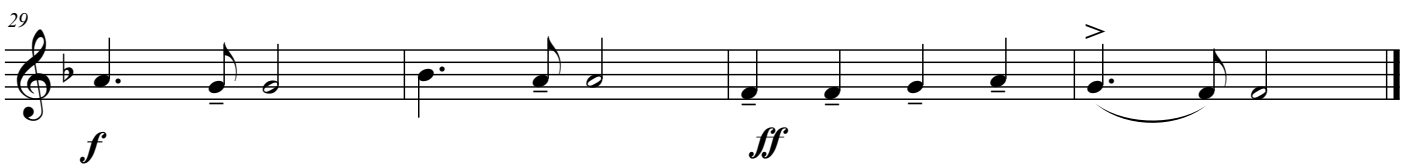
25

4



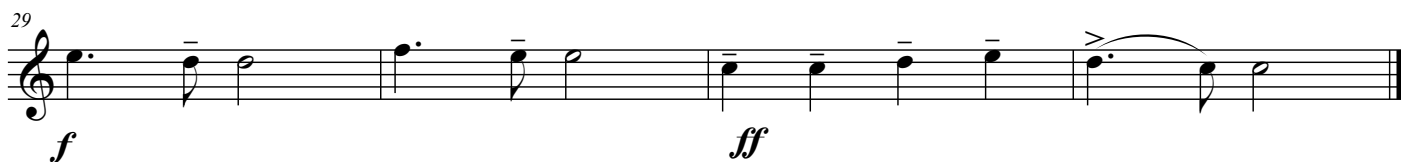
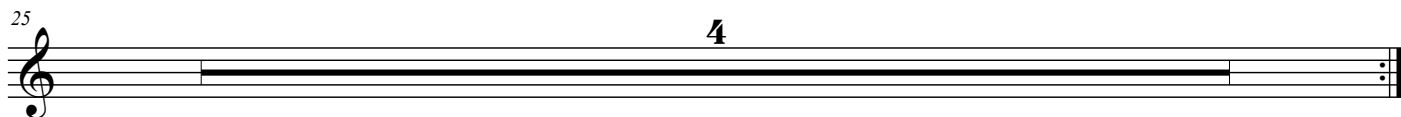
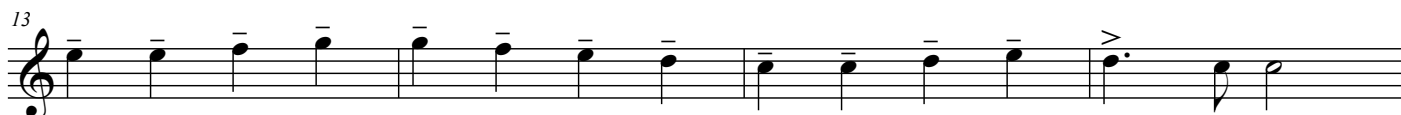
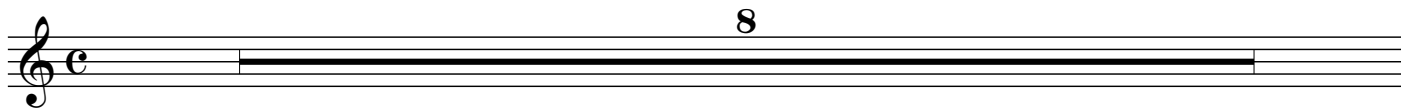
29

*f* *ff*



# Europahymne "Freude schöner Götterfunken"

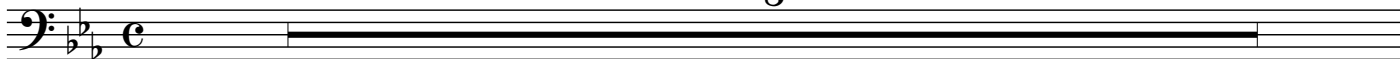
Musik: Ludwig van Beethoven Bearb.: Gottfried Hummel



# Europahymne "Freude schöner Götterfunken"

Musik: Ludwig van Beethoven Bearb.: Gottfried Hummel

8



9



*f*

13



17



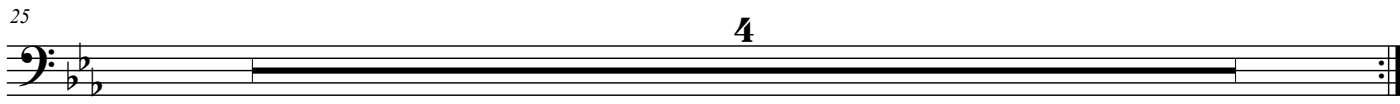
*mf*

21



*ff*

25



4

29



*f*

*ff*

# Die deutsche Nationalhymne

Musik: **Joseph Haydn** Bearb.: **Gottfried Hummel**

Melodie

Bgl.

*mf* *f*

This system contains measures 1 through 4. The melody line starts with a whole rest in measure 1, followed by a half rest in measure 2. In measure 3, it begins with a quarter note G4, followed by quarter notes A4, B4, and C5 in measure 4. The accompaniment (Bgl.) features a rhythmic pattern of eighth notes in the right hand and quarter notes in the left hand. Dynamic markings *mf* and *f* are present.

Mel.

Bgl.

*mf* *f*

This system contains measures 5 through 8. The melody line continues with quarter notes D5, E5, and F5 in measure 5, followed by quarter notes G5, A5, and B5 in measure 6. In measure 7, it begins with a quarter note C6, followed by quarter notes B5, A5, and G5 in measure 8. The accompaniment continues with the same rhythmic pattern. Dynamic markings *mf* and *f* are present.

Mel.

Bgl.

*mf* *f* *p*

This system contains measures 9 through 11. The melody line continues with quarter notes F5, E5, and D5 in measure 9, followed by quarter notes C5, B4, and A4 in measure 10. In measure 11, it begins with a quarter note G4, followed by quarter notes F4, E4, and D4 in measure 12. The accompaniment continues with the same rhythmic pattern. Dynamic markings *mf*, *f*, and *p* are present.

Mel.

Bgl.

*mf*

This system contains measures 12 through 14. The melody line continues with quarter notes C4, B3, and A3 in measure 12, followed by quarter notes G3, F3, and E3 in measure 13. In measure 14, it begins with a quarter note D3, followed by quarter notes C3, B2, and A2 in measure 15. The accompaniment continues with the same rhythmic pattern. A dynamic marking *mf* is present.



Mel. <sup>15</sup>  
*ff* *mf*

Bgl. *ff* *mf*

Mel. <sup>18</sup>

Bgl. *ff* *ff*

Mel. <sup>21</sup>  
*mf* *f rit.*

Bgl. *mf* *f rit.*

# Die deutsche Nationalhymne

Musik: Joseph Haydn Bearb.: Gottfried Hummel

*f*

5

*mf* *f*

9

*mf* *f* *p*

13

*mf* *ff*

17

*mf* *ff*

20

*mf* *f* *rit.*

# Die deutsche Nationalhymne

Musik: Joseph Haydn Bearb.: Gottfried Hummel

*f*

5

*mf* *f*

9

*mf* *f* *p*

13

*mf* *ff*

17

*mf* *ff*

20

*mf* *f* *rit.*

# Die deutsche Nationalhymne

Musik: Joseph Haydn Bearb.: Gottfried Hummel

*f*

5

*mf* *f*

9

*mf* *f* *p*

13

*mf* *ff*

17

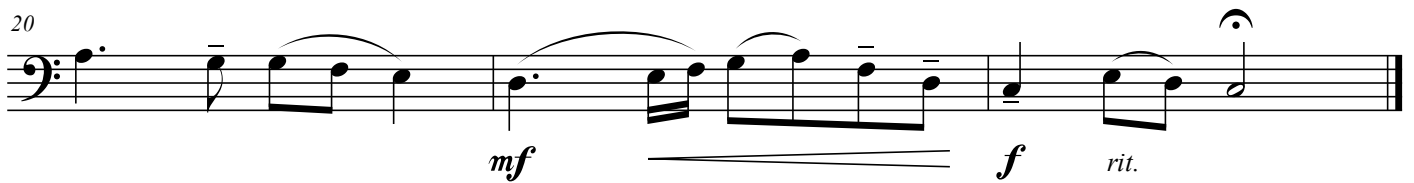
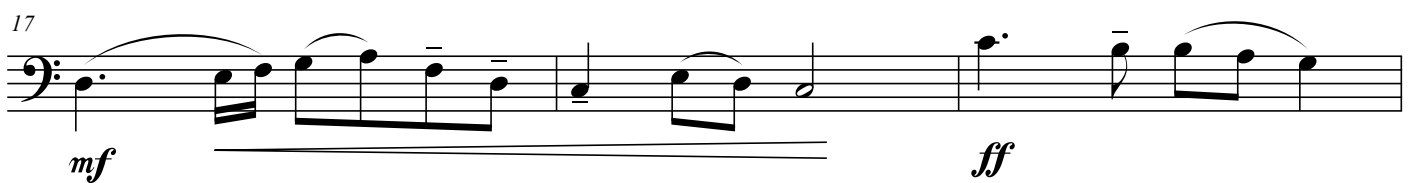
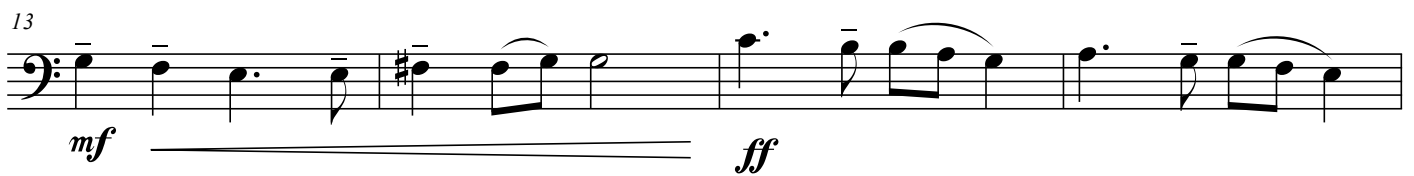
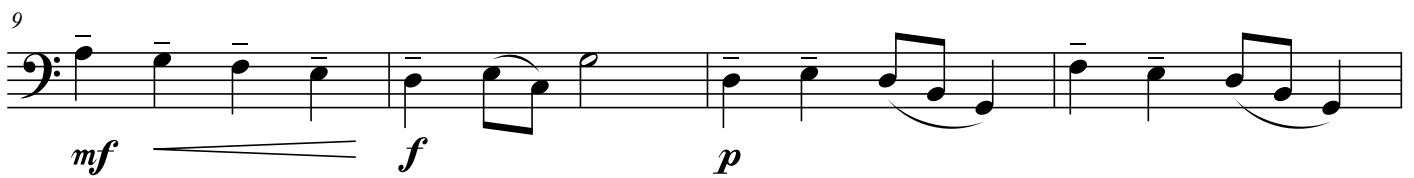
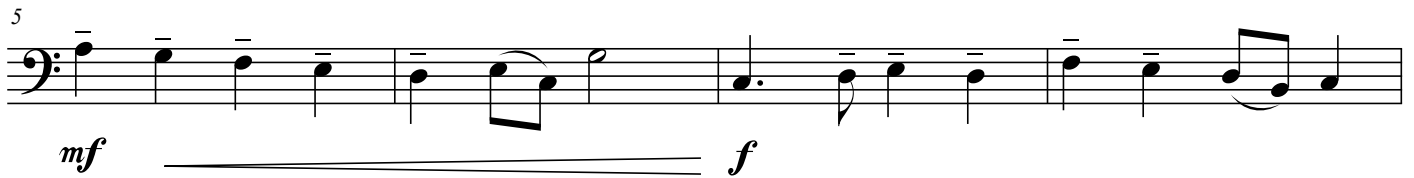
*mf* *ff*

20

*mf* *f* *rit.*

# Die deutsche Nationalhymne

Musik: Joseph Haydn Bearb.: Gottfried Hummel



# Andante Gracioso aus "Sonate A-Dur KV 331"

Musik: Wolfgang Amadeus Mozart Bearb.: Gottfried Hummel

Melodie

Bgl.

mf

mf

f

mf

Mel.

Bgl.

f

f

Mel.

Bgl.

mf

mf

Mel.

Bgl.

f

mf

f

mf

Mel. <sup>25</sup>

*mf*

Bgl. *mf*

Mel. <sup>31</sup>

*f*

Bgl. *f*

Mel. <sup>36</sup>

*mf* *f* *mf*

Bgl. *mf* *f* *mf*

# Andante Gracioso aus "Sonate A-Dur KV 331"

Musik: Wolfgang Amadeus Mozart Bearb.: Gottfried Hummel

mf

6

mf

11

f mf

16

f

21

mf mf

26

mf

31

f

36

mf f mf



# Andante Gracioso aus "Sonate A-Dur KV 331"

Musik: Wolfgang Amadeus Mozart Bearb.: Gottfried Hummel

mf

mf

f

mf

f

mf

mf

mf

f

mf

f

mf

# Andante Gracioso aus "Sonate A-Dur KV 331"

Musik: Wolfgang Amadeus Mozart Bearb.: Gottfried Hummel

mf

6

11

f mf

16

f

21

mf mf

26

mf

31

f

36

mf f mf

# Andante Gracioso aus "Sonate A-Dur KV 331"

Musik: Wolfgang Amadeus Mozart Bearb.: Gottfried Hummel

mf

6

11

16

21

26

31

36